

New or retrofit Ultra-sorb® and Rapid-sorb® dispersion

DRI-STEEM®
from the Humidification Experts

DRI-STEEM Dispersion

Insulated Tube Option

Addendum to the Ultra-sorb Manual & Rapid-sorb Installation Instructions

Unpacking and installation

Unpacking

- Remove the dispersion assembly from the shipping container; be careful not to bump or scrape the PVDF insulating material on the dispersion tubes.
- Some dispersion panels are shipped unassembled by customer request or by shipping necessity. Do not lay loose insulated dispersion tubes across or under anything that could compress or damage the insulating material. Compressed insulating material has a reduced R-value.
- Avoid bumping or snagging the PVDF insulating material. Although PVDF is robust, rough handling can cause tears, which could negatively impact performance.

Rapid-sorb installation

See the unpacking instructions above and the Rapid-sorb section of your specific humidifier manual.

After installation and before start-up, remove the clear poly film by tearing it along the perforation. **Do not use a knife or sharp object to remove the poly film.**

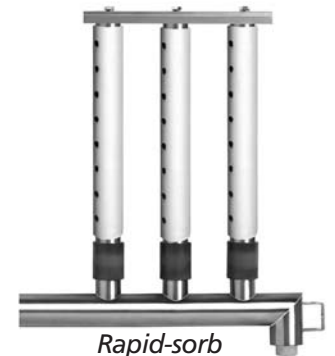
Ultra-sorb installation

See the unpacking instructions above and the Ultra-sorb manual shipped with your dispersion assembly.

After installation and before start-up, remove the clear poly film by tearing it along the perforation. **Do not use a knife or sharp object to remove the poly film.**



Ultra-sorb



Rapid-sorb

CAUTION!

The insulated dispersion tubes are sleeved in clear poly film for protection during processing, shipping, and installation.

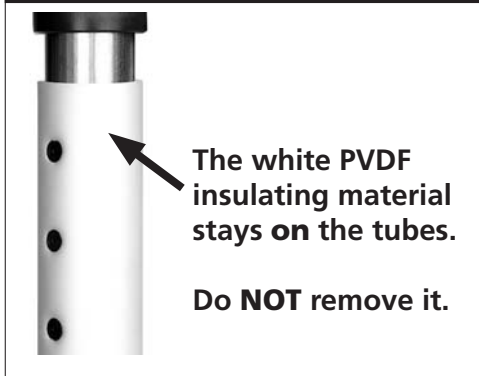
To prevent dirty insulating material, leave the clear poly film on until installation is complete.

Equally important, remove and discard the clear poly film before start-up by tearing it along the perforations.



Retrofitting an existing Ultra-sorb

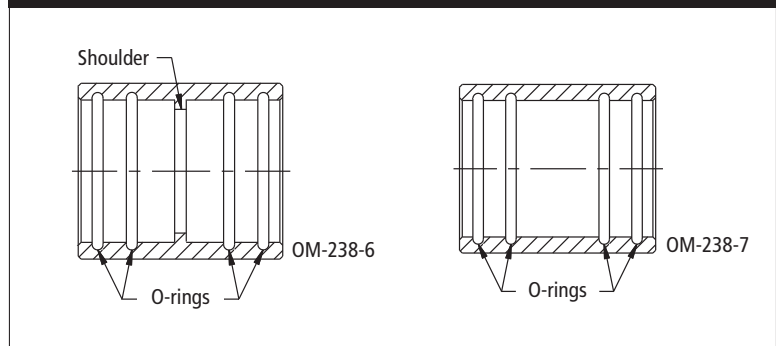
Figure 2-1:
PVDF Insulating material



Before you begin, shut off steam to the system, and let all hot surfaces cool. See the Warning below.

Note: Replacement slip couplings with internal O-rings are shipped with retrofit insulated tube orders. There are two types of slip couplings: with shoulders and without. Slip couplings with shoulders must go on the supply header end of the dispersion tube. See Figure 2-2.

Figure 2-2:
Dispersion tube slip couplings

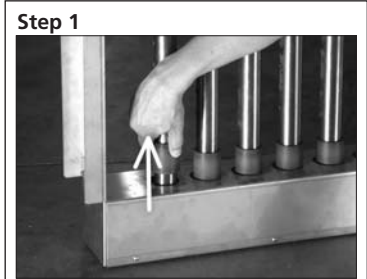


Removing uninsulated tubes

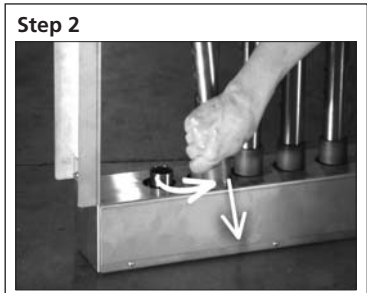
Note: The photos below depict Ultra-sorb LV (vertical tubes). The supply header is on the top, and the condensate header is on the bottom. If retrofitting an Ultra-sorb LH (horizontal tubes), pay attention to the location of the supply and condensate headers.

Perform the following steps for each uninsulated tube being removed:

1. With a pulling and twisting motion, slide the slip coupling off the condensate header far enough to reveal the end of the dispersion tube.



2. Swing the dispersion tube away from the condensate header; pull the dispersion tube and slip coupling off the supply header.



WARNING!

Steam humidification systems have extremely hot surfaces.

To avoid burns, allow humidifier, steam pipes, and dispersion assembly to cool before touching any part of the system.

Retrofitting an existing Ultra-sorb

3. Remove the dispersion tube.
Make sure that nothing loose falls into the header.

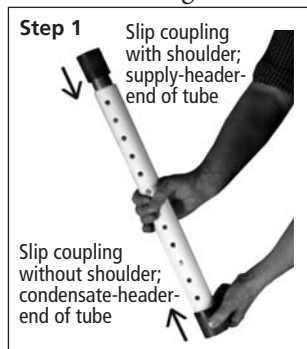


Installing insulated tubes

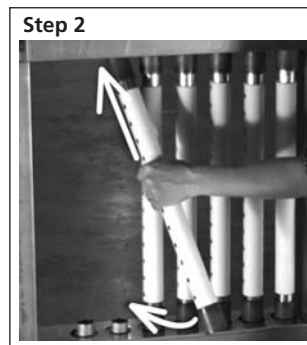
Note: The photos below show the insulated dispersion tubes **without the clear poly film** for demonstration purposes only. To prevent dirty insulating material, install the insulated dispersion tubes before tearing off the clear poly film.

Perform the following steps for each insulated tube being installed:

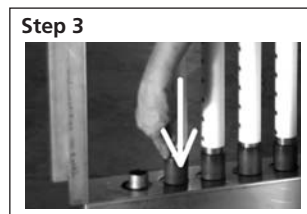
1. Slide the new slip couplings onto the insulated dispersion tube as shown.



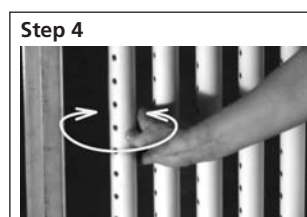
2. Connect the dispersion tube to the supply header with the shouldered slip coupling. Push and twist the dispersion tube until the shoulder bottoms out, then connect the dispersion tube to the condensate header with the other slip coupling.



3. Push the shoulderless slip coupling against the stop disk on the condensate header.



4. Rotate the dispersion tube to point the tubelets across (perpendicular to) the airstream.



For more information

Ultra-sorb dispersion assemblies are shipped with a comprehensive manual. Refer to it for assembly, parts, installation, troubleshooting, piping, maintenance, performance, and warranty information.

Rapid-sorb dispersion assemblies are shipped with installation instructions. See the Rapid-sorb section of the manual shipped with your humidifier.

This addendum must be left with the owner and should be accessible for reference.

Caring for the insulating material

For the most recent product information, visit our web site, www.dristeem.com, or contact us.

Phone: 800-328-4447

E-mail: sales@dristeem.com

- If the insulating material gets torn, repair the tear with our Insulating Material Repair Kit before dispersing steam or moving air through the air handler to prevent further damage. This available kit uses tested and proven PVDF as repair material; do not use other adhesives or repair methods in place of the kit.
- If the insulating material gets dirty or smudged, gently clean it with a damp cloth and a solution of soapy water or a diluted non-toxic, biodegradable cleaner/degreaser.
- Do not clean the insulating material with a pressure washer. The direct spray could cause damage.
- If using a torch in the vicinity of the dispersion panel, keep the flame away from the insulating material to avoid damage
- PVDF is inherently resistant to UV light. Indirect, low-intensity UV-C light from germicidal lamps will not cause the insulating material to degrade.
- Do not tighten mounting clamps or fasteners to any part of the dispersion tube.

DRI-STEEM Corporation

An ISO 9001: 2000 certified corporation

European office:

Marc Briers

Grote Hellekensstraat 54 b

B-3520 Zonhoven

Belgium

+3211823595 (voice)

+3211817948 (fax)

E-mail: marc.briers@dristeem.com

U.S. Headquarters:

14949 Technology Drive

Eden Prairie, MN 55344

800-328-4447

952-949-2415

952-229-3200 (fax)

Continuous product improvement is a policy of DRI-STEEM Corporation; therefore, product features and specifications are subject to change without notice. Visit dristeem.com for the most current literature.

DRI-STEEM, Rapid-sorb, and Ultra-sorb, are registered trademarks of DRI-STEEM Corporation and are filed for trademark registration in Canada and the European community.

© 2007 DRI-STEEM Corporation